



ARTS | CULTURE | NORTH VANCOUVER

PUBLIC ART CALL REY SARGENT PLAY AREA

Deadline: Thursday January 06, 2011 @ 4 pm

For More Information Contact:

lori.phillips@artsoffice.ca

T: 604-982-3893

www.artsoffice.ca





INTRODUCTION

The City of North Vancouver is a vibrant urban municipality with a population of 48,000 that is situated within the Metro Vancouver Regional District. As Canada's third largest metropolitan region, the City of North Vancouver offers a diversified economy and extensive range of employment, education, and recreational opportunities.

The municipality has a number of outstanding natural attributes that set it apart from others. It is a waterfront community centrally located on the north shore of Burrard Inlet, one of the world's great ports. Hills and heavy rainfall are distinctive attributes of the area. A sloping southern exposure offers sunlight and spectacular views to the Vancouver skyline. To the north, mountains in neighbouring municipalities offer exceptional recreational opportunities, such as trails, skiing, suspension bridges and a fish hatchery.

PUBLIC ART OPPORTUNITY

The City of North Vancouver Public Art Program, facilitated by The Arts Office is accepting Expressions of Interest from artists or artist teams to develop a one-of-a-kind children's play area as part of the Rey Sargent Park upgrade that will occur in 2011. The goal of the public art component is to design, fabricate and install a playable public artwork that invites creative exploration and is socially engaging.

This opportunity is open to professional artists, artist teams and/or design professionals who:

- Are able to meet the creative, eligibility and performance criteria;
- Can demonstrate the skills to manage all phases of the project implementation from design through to installation, in conjunction with the project's landscape architect and municipal staff.



PROJECT SITE

The City of North Vancouver is currently planning a complete upgrade of Rey Sargent Park, located at the north-west corner 21st Street and Lonsdale Avenue. This small 1,500 sq. meter park currently includes sporadic seating and a small children's play area that is shaded by historically significant black locust trees.

The new park plan is being designed in conjunction with the adjacent property where the North Vancouver School District is currently building its new administrative offices and first class art gallery for the Artists For Kids Trust. The main entrance for the Art Gallery has been designed to face directly onto the community park creating an inviting and welcoming atmosphere for community engagement.

PUBLIC ART INTENT

The goal of the public art project is to create and install playable public artwork(s) that are integrated into the park design, are socially engaging for a wide range of age groups and invite creative exploration.

The artistic elements designed for the Rey Sargent Park play area should engage young minds and bodies in a creatively open-ended fashion that will invite social interaction, creative interpretation and be conducive to dramatic presentation.

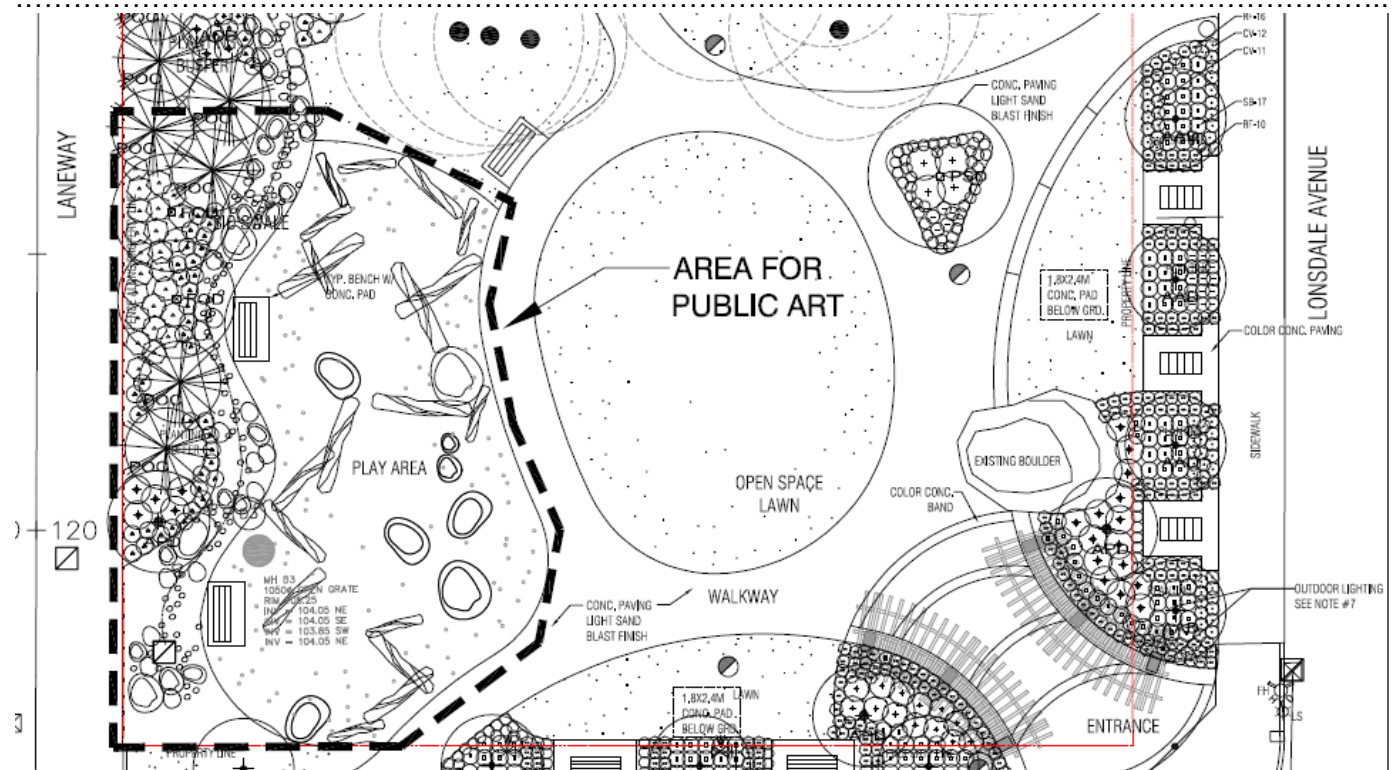
Words that might best convey the intention for this area are: Playable, imaginative, challenging, inviting, inventive, interactive, hiding & seeking, jumping, laughing, accessible and inclusive.

Presently, the children's play area has been designated but not designed. The landscape drawing (*Attachment 1*) show it as a naturalized area with scattered rocks and logs for the children to jump and climb on. During the excavation of the adjacent property multiple large boulders were uncovered and retained for reuse in Rey Sargent Park. These boulders are currently being stored on the west edge



of the park. The selected artist will have the option to incorporate these boulders into the final design of the play area if desired.

Currently the surface treatment for the play area is specified as engineered wood chips and will be provided for outside of the art budget. The play area will be nestled next to a bio-swale which runs along the entire western edge of the park. The planting incorporated into the bio-swale will act as both a green buffer between traffic in the laneway, and a natural environment for creative play. As such, the final layout of the bio-swale will be determined in tandem with the artistic elements.



.....(For Full Park Context Please Refer to Attachment I – Rey Sargent Park – Landscape Design Drawing)



PROJECT SCHEDULE

Landscape design and construction schedule for Rey Sargent Park renovation.

February 28, 2010 - Rey Sargent Park design development complete

April 15, 2011 - Rey Sargent Park construction documents complete

May 15, 2011 - Construction commences

August 30, 2011 - Park construction including artwork complete

Please note: The project schedule is subject to change.

ARTWORK BUDGET

The public art project budget for Rey Sargent Park is \$48,000. Artwork budget must be inclusive of all costs including but not limited to artist fees, design, engineering, materials, fabrication, transportation, and installation. The artist will be responsible for General Public Liability insurance between \$2-5 million dependent upon risk assessment of the selected project.

ARTIST SELECTION CONSIDERATIONS

For the review of submissions, the Selection Panel will take the following artist selection criteria into consideration::

- Artistic excellence, innovation and originality as evidenced by representations of past work and other supporting material;
- The artist's body of work is considered to be aligned with the goals of the project.
- The artist's previous experience is deemed to be sufficient to meet the demands of the project.
- Availability of the artist to participate in project coordination, design, approval and implementation;
- Artist's assessed ability to meet project deadlines and to perform in a timely, professional manner.
- Results of reference checks.



In addition to the artist selection criteria above, the Selection Panel will consider the following practical matters associated with this project:

- Compliance with safety standards for children’s play environments;
- Maintenance requirements;
- Material durability;
- Playability;
- Environmental impact.

ARTIST SELECTION PROCESS

A Selection Panel comprised of individuals representing the following areas will be assembled to review all submissions:

- one Project Design Team representative
- one Public Art Committee representative
- one CNV Project Manager, and
- two citizens with arts experience.

The Panel will short-list up to a maximum of three proposals. Short-listed artists will receive an honorarium to further develop their project proposal. During this stage of the process, the Public Art Coordinator will make arrangements for each artist to meet with representatives of the Project Design Team to discuss the opportunities and constraints associated with the project.

Short-listed artists will present their project proposals directly to the Selection Panel. The final selection will be made based on the strength of the presentation and on the alignment of the proposal with the parameters outlined in this document.

(NOTE: THE SELECTION PANEL RESERVES THE RIGHT NOT TO AWARD THE COMMISSION)

PUBLIC ART PROJECT TIMELINE (2010 – 2011)

Distribute Public Art Call.....	November 2010
<u>Public Art Deadline For Expressions of Interest</u>	<u>January 06@ 4pm</u>
Selection Panel Meets.....	week of Jan. 10, 2011
Short-list Artists (notification).....	week of Jan. 10, 2011
Individual Site Meetings for short-listed artists.....	week of Jan. 17, 2011
Short-list Artists (presentations to Selection Panel).....	week of Feb. 07, 2011
Signing of Contract.....	week of Feb. 12, 2011
Project Fabrication.....	March – June 2011
Park Completion (including public art).....	August 2011

TO APPLY

On or before the January 06, 2011 please provide:

1. **Cover letter**, 1 page outlining your interests and initial thoughts for our project.
2. **Resume**, highlighting your credentials and relevant experience.
3. **CD** containing 10 **digital images** of previous artwork. For each image include:
 - Artwork Title and Location;
 - Date completed;
 - Commissioned Value;
 - Brief Written Description of Initial Concept.
4. **Your contact information** including phone, e-mail, website and mailing address.
5. **Return Envelope**, self-addressed and stamped with sufficient postage.
(if return of submission package is desired)

DELIVER TO:

**CNV Public Art Program
c/o The Arts Office
#407 – 1200 Lonsdale Ave,
North Vancouver, BC, V7M 3H6**

For More Information Contact:

Lori Phillips

604-984-9582

Lori.phillips@artsoffice.ca

www.artsoffice.ca

