

Public Art Call
to Squamish Nation Artists
for Expressions of Interest



Creekside Trail Marker

City Operations Centre

City of North Vancouver



*Return of the Spawning Salmon, Gateway to Ancient Wisdom, Welcome Figure
Coast Salish art installations in the City of North Vancouver*

Submission Deadline: April 28, 2014 @ 4 pm

Public Art Commission: \$24,000

This is a call for Expressions of Interest from the City of North Vancouver Public Art Program, seeking a Squamish Nation Artist to create and install a contemporary Coast Salish public artwork for placement outside the City of North Vancouver Operations Centre on Bewicke Avenue.

MUNICIPAL CONTEXT

The City of North Vancouver is a vibrant urban municipality with a population of approximately 50,000 that is situated within the Metro Vancouver, Canada's third largest metropolitan region. The City offers a diversified economy and extensive range of employment, education, and recreation opportunities. The municipality is blessed with a number of outstanding natural attributes that set it apart from others. It is a waterfront community centrally located on the North Shore of Burrard Inlet, one of the world's great ports. Hills and high rainfall are distinctive attributes of the area.

North Vancouver City Council is committed to ongoing initiatives that work towards its goal of creating a truly sustainable City. It's award-winning Lonsdale Energy Corporation, providing district energy to Lower Lonsdale, Central Lonsdale and the Marine Harbourside areas, and the new Long Term Transportation Plan focusing on walking, biking and transit are a start. Combine that with the successful storm water management, curbside recycling, sustainable development guidelines, and network of parks and greenways and the City of North Vancouver is proud to say that its total per capita greenhouse gas emissions is 56% less than the BC provincial average.

SITE CONTEXT

The City of North Vancouver, Engineering Parks and Environment Department has recently built a new Operations Centre. The Operations Centre is home base to the staff, vehicles and equipment responsible for the Parks, Streets and Utility work programs that care for the community's natural and built public realm.

Located at 61 Bewicke Avenue, the Operations Centre is situated adjacent to Mosquito/Wagg Creeks and is neighbour to the Squamish Nation. Of significant note is the proximity of the Operations Centre to one of the Squamish Nation sacred cemeteries located on the north side of Mosquito Creek.



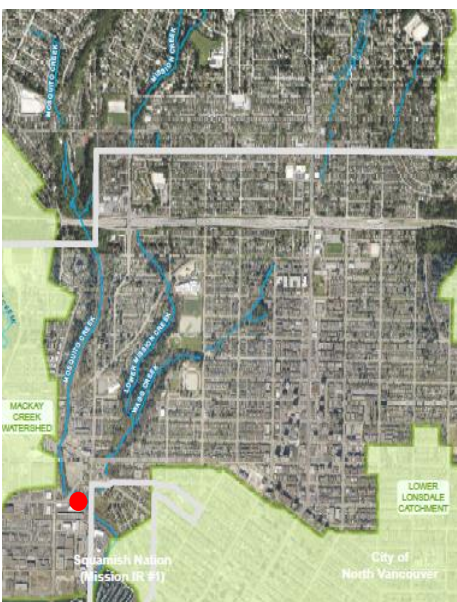
Squamish Nation Arts & Culture

The Skwxwú7mesh Úxwumixw (Squamish People, villages and community) have a complex and rich history. They are descendants of the Coast Salish Aboriginal Peoples who lived in the present day Greater Vancouver area, Gibson's landing and Squamish River watershed. (www.squamish.net).

The Squamish Nation has a thriving artistic community, with carvers, painters, weavers, musicians and jewelers that maintain a connection to the tradition arts while acknowledging existence in the modern world. These contemporary artists are creating inspiring works that are forging new and exciting pathways for the future of Coast Salish arts.

Mosquito/Wagg Creek.

The Mosquito Creek is approximately 9 km long and drains from the headwaters located between Grouse Mountain and Mount Fromme. The City Operations Centre is located at the intersection of Mosquito Creek and Wagg Creek. (see map below)



As part of the redevelopment that has taken place in the area, a stream side pathway has been constructed alongside Mosquito Creek. This pathway will continue further north in conjunction with other development projects that will occur in the coming years.



This photo shows the location of the new bridge over Mosquito Creek. The sparse area next to the bridge will be filled in with an assortment of native plant species.

PUBLIC ART OPPORTUNITY

A public artwork created for this site, will celebrate the unique aspects of the location, as a junction where two cultures and two rivers meet. It will provide ongoing interest for regular users of the area as a contemporary Aboriginal artwork that integrates Coast Salish cultural traditions with modern artistic expression.

BUDGET

The total budget available to artist(s) team is \$24,000. Artwork budget must be inclusive of all costs including but not limited to artist fees, studio overhead, consultant fees, artwork fabrication, site preparation, travel, transportation, installation, all taxes and General Liability Insurance in the amount of five million dollars.

ELIGIBILITY CRITERIA

This public art call has been prepared to solicit response specifically from Squamish Nation artists (working in any medium) who can demonstrate the creative expertise and technical skills required to manage all phases of the public art process from design development through to installation.

ARTIST SELECTION PROCESS

The Public Art selection process will be undertaken by an Artist Selection Panel and will occur in two phases. The five person Artist Selection Panel will be comprised of representatives from the following areas: Squamish Nation, NV Public Art Program Steering Committee, CNV Project Manager, professional artist and design professional.

Phase I - Expressions of Interest

The Artist Selection Panel will review all eligible Expressions of Interest submissions with the goal of short-list three candidates for further consideration. The submissions will be reviewed using the following creative criteria:

- Previous work: demonstrated artistic and technical excellence;
- Creative Style: explores innovative approaches to traditional Coast Salish art forms;
- Project Fit: potential for creating a unique one-of-a-kind trail marker that brings meaning to a place where two rivers and two cultures meet;
- Technical Skills: ability to deliver a project from concept to installation.

Phase II – Concept Proposals

Short-listed artists will be invited to prepare a concept proposal for presentation to the Artist Selection Panel and will receive a presentation fee in the amount of \$500. As part of this phase, the artists will have the opportunity to meet with members of the design team and municipal staff to review project details and ask questions. The short-listed presentations will be reviewed and decisions made based on eligibility and creative criteria as outlined in this Call.

*** Note if no submission warrants consideration, the Artist Selection Panel reserves the right not to award the commission.*

TIMELINE

Posting Circulated.....	March 24, 2014
Submissions Materials Due @ 4 pm.....DEADLINE.....	April 28, 2014
Selection Process Review & Short-listing	May, 2014
Short-listed Artists Presentations.....	June, 2014
Contract Duration	Summer 2014
Anticipated date for Installation of selected artwork	Fall 2014

SUBMISSION REQUIREMENTS

Submissions to this call must include the following information provided to The Arts Office on a PC compatible CD or USB memory stick.

1. **Letter of Interest**: No longer than one typed page. (MS word format or PDF)
2. **Artist Resume** - If applying as an artist team please provide one for each artist
3. **Digital Images** - Up to 12 digital jpeg images showing previous examples of public art created by the artist.
4. **Image List** – Providing the following information about the supplied digital images: artwork’s title, date completed, medium, location and commission value.

Please do not submit original artwork, stapled or bound materials or documents in plastic sleeves.

SUBMIT APPLICATION PACKAGES TO:

Attention: Lori Phillips, Public Art Coordinator

The Arts Office

315 – 1277 Lynn Valley Road, North Vancouver, BC, V7J 0A2

604.982-3893

(Note: Electronic packages may be submitted to the following email address: pasubmissions@artsoffice.ca with the subject line: Creekside – Your Last Name)

Submission Materials Due: Monday, April 28, 2014 @ 4 pm