



PUBLIC ART

Artist Call for Expressions of Interest

Keith Road Bridge

Submission Deadline:

Monday, May 5, 2014 @ 4 pm

www.artsoffice.ca



REQUEST FOR EXPRESSION OF INTEREST – KEITH ROAD BRIDGE

The District of North Vancouver has identified an opportunity for public art to be considered and integrated into a concept design for the new Keith Road Bridge, spanning Lynn Creek in North Vancouver. The municipality is seeking a professional artist able to design one-of-a-kind elements that can be creatively incorporated into the required bridge components such as railings, lighting, and abutments. The scope of this call is limited to creating the final design package in consultation with a project design team, with a main project contractor being responsible for its fabrication and installation. This is a request for Expressions of Interest (EOI) and is open to all artists and artistic professionals living in British Columbia, Canada.

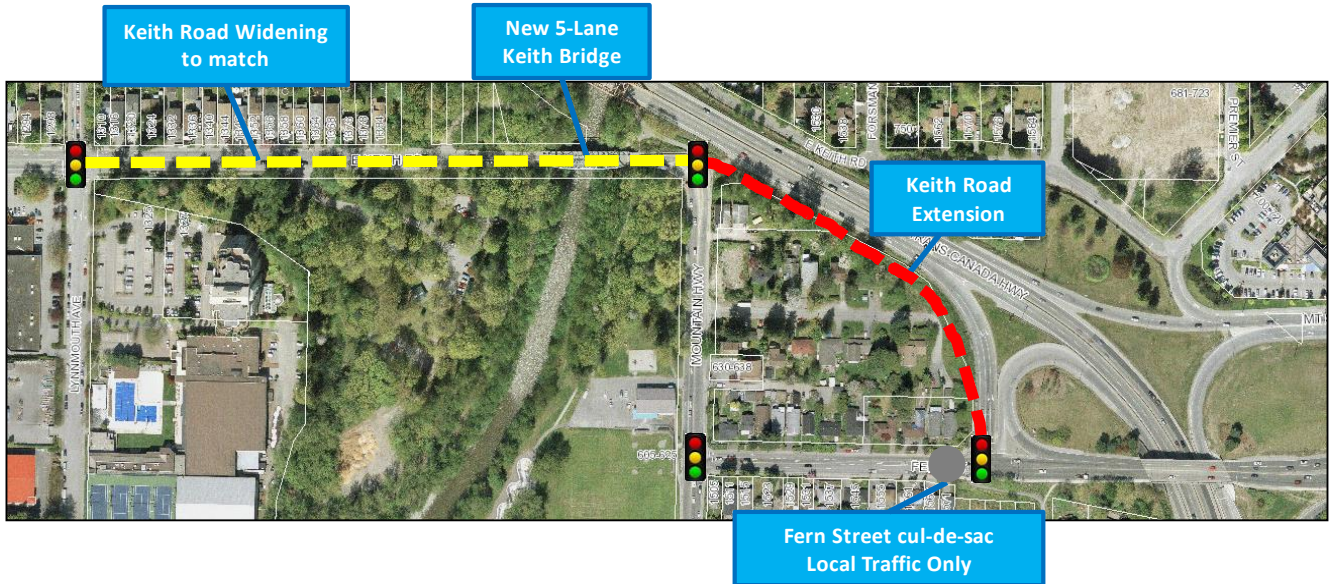
INTRODUCTION

The District of North Vancouver is a vibrant urban municipality with a population of 88,000 that is situated on the north side of Burrard Inlet. Nestled on the mountain side, the District features several distinctive and diverse village style neighbourhoods each with its own unique natural offerings, kayaking inlets, mountain biking trails, ski hills and suspension bridges.

KEITH ROAD BRIDGE – PROJECT OVERVIEW

The District is starting design of the new Keith Road Bridge and is targeting to replace the bridge in 2015. The current two-lane bridge is 70 years old, is nearing the end of its life and is unable to handle increasing traffic, resulting in congestion during peak travel times. The bridge and adjoining road form part of a major vehicle route leading to Ironworkers Memorial Second Narrows Bridge as well as the Seymour community. It is heavily used by North Shore commuters, transit, cyclists and pedestrians.

The District intends to build a new bridge that will include two travel lanes in each direction as well as bike lanes and sidewalks in both directions. The bridge project will also need to include an upgrade to the block of Keith Road from Mountain Highway/Lynnmouth Avenue to the bridge.



PROJECT FEATURES

It is anticipated that the new four lane bridge will have a similar scale to the photo shown below, with the following elements providing potential opportunities for design enhancement.

- Railings
- Lighting
- Abutments



Port Coquitlam, BC

As Keith Road Bridge spans Lynn Creek a popular recreational destination, it is anticipated that there will be improvements made to the pedestrian pathways on the underside of the bridge. Given that these pedestrian routes are well used by the local community, the abutments may be considered for a creative intervention.

All artistic enhancements to the bridge design will be subject to safety and transportation standards and must be accessible, durable, vandal-proof, weather-resistant, technically feasible, affordable and site specific.

COMMUNITY CONTEXT

The Keith Road Bridge is situated in the Lower Lynn which has been designated in the District's Official Community Plan as a new Town Centre, in recognition of its location close to employment

lands, retail opportunities, local amenities and Phibbs Transit Exchange. It is envisioned to become a transit-oriented mixed-use community comprised of a wide range of housing types for people of all stages of life, with accessible places of work, convenient shopping and amenities. One of the first major developments in the area, Seylynn Village is currently under construction. It is situated on the east side of the Keith Road Bridge. This mixed-use project comprised of three towers ranging in height from 24 to 32 storeys, will provide 720 residential units, 70 affordable rental apartments, a childcare facility and commercial space. Directly south of the Keith Road Bridge there are two sizeable parks running along the edge of Lynn Creek. Bridgman and Seylynn parks play an important role in providing diverse park amenities including forested trails, playgrounds, playing fields, a skate bowl, picnic area, and open grass areas for the surrounding neighbourhood and district residents. The new Keith Road Bridge will be visible to parks users from pathways that lead them under the bridge and north along the river to the splendors of Lynn Canyon.

ARTIST COMMISSION

The artist's commission is \$12,000 and this includes artist fee, final design package, product coordination with design team, travel, taxes and all consultation required during all phases of the project. The fabrication and installation of the artwork will be undertaken by the Main Contractor when the project proceeds.

⊕ *This public art commission is contingent upon the advancement of the Keith Road Bridge project and municipal council's approval of an art component associated with this project.*

ELIGIBILITY

This public art call is open to all artistic professionals working in British Columbia.

ARTIST SELECTION PROCESS

An Artist Selection Panel will be established as per the District of North Vancouver's Public Art Policy, to select the artist and artwork. This panel will consist of five representatives as follows:

- North Vancouver Public Art Advisory Committee representative
- 2 Local Art or design professional representatives
- Engineering Design Team representative
- Local Area resident representative

The selection panel will short-list three artists from the submissions. The short-listed artists will receive an honorarium of \$750 to prepare and develop a preliminary concept proposal. This honorarium will be paid upon receipt and presentation of the concept proposal.

Shortlist Selection Criteria

Shortlist submissions will be reviewed using the following criteria:

- Images: Previous work is refined, high quality, creative and original.
- Context: Previous work demonstrates ability to explore variety of themes and site applications.
- Resourceful: Provides a good cost/benefit ratio, durable, high quality, environmentally sensitive.
- Project Fit: Artistic style shows potential for translation into bridge parameters.
- Availability. (June 2014)

The shortlist artist presentations will be accessed according to the final selection criteria. One artist will be selected to enter into a Contract Agreement with the District of North Vancouver to complete a detailed design package, in coordination with the engineering and structural design team for the bridge.

Final Selection Criteria

- Concept Design: Delivers an innovative and memorable visual experience, both for vehicular traffic and for pedestrians using the bridge and/or adjacent parks.
- Sense of Place: Concept Design explores theme(s) appropriate and unique to the site.
- Resourceful: Concept Design provides an excellent cost/benefit ratio, within the parameters of the bridge construction budget.
- Project Fit: Artist is available during project timeframe, can work collaboratively with the project team.

☛ The Artist Selection Panel reserves the right not to award the commission.

PROJECT SCHEDULE (2014)

Distribute Public Art Call.....April 17 2014

Submission Deadline Expressions of Interest.....May 5, 2014

Selection Panel Meets (up to 3 artists will be short-listed)May 6-9 2014

Short-listed Artist's Presentations May 30 2014

Selected Artist Final Design Work.....June 2014

The District of North Vancouver is working towards an early 2015 start for the construction of the Keith Bridge Project. Once construction begins the project will take approximately 1.5 years to complete.

SUBMISSION INSTRUCTIONS

General

- Artists are asked to submit the information listed below on **one PDF Acrobat format file, no more than 5 MB**. Please do not secure the PDF file as there may be a need to extract an image for presentation to the selection panel. It is recommended the entire PDF be formatted horizontally as it will be presented to the selection panel projected on a horizontal screen.
- Photos of artwork to be captioned on the same page, with the artist's last name and the artwork title, size, & value and other brief information you wish to communicate about the artwork.
- Email or deliver to arrive at The Arts Office, by 4pm Monday May 5, 2014.
- As a backup, a PC compatible CD or USB may be mailed or delivered to arrive by Monday May 5, 2014 by 4pm.
- All backup materials to be labeled DNV Keith Bridge + (Artist's Last Name)
- Neither the North Vancouver Arts Office, nor the District of North Vancouver will be responsible for any costs incurred in responding to this Call

1. Cover Letter – (1 page max)

- Provides some perspective on the artist's practice and specific interest in this project.

2. Letter of Interest – (1 page max)

- Outlines or describes artist's suggested approach or methodology for this project
- May include written description of preliminary concept (not drawings please)

3. Artist Resume or CV

- Include a professional artist resume
- References: Short-Listed artists will be asked to provide the names and contact information of two previous clients or other artistic professionals who have an intimate knowledge of your work and working methods.

4. Images of Artist's Work

- Submit up to 12 digital images of artist's previous public art work
- Please indicate a caption for each image with information about the artwork including artist's name, title, size, year completed & value.

- Recommended that PDF be formatted horizontally, as all images will be presented as a horizontal project to the panel.

E-Mail EOI Submissions to:

pasubmissions@artsoffice.ca

include subject line: DNV Keith Bridge - (Artist Last Name)

Mailing EOI Submissions using a CD or USB (*PC Compatible*)

The Arts Office, 315 – 1277 Lynn Valley Road, North Vancouver, BC, V7J 0A2

provide submission on a labeled CD or PC compatible USB

Submission Deadline: Monday May 5, 2014 4pm

For More Information Contact:

Lori Phillips, Public Art Coordinator

Lori.phillips@arts.office.ca (P: 604-984-9582)

www.artsoffice.ca