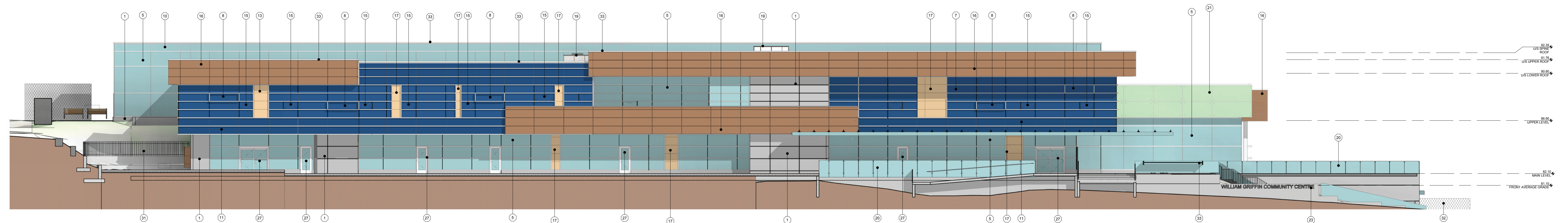
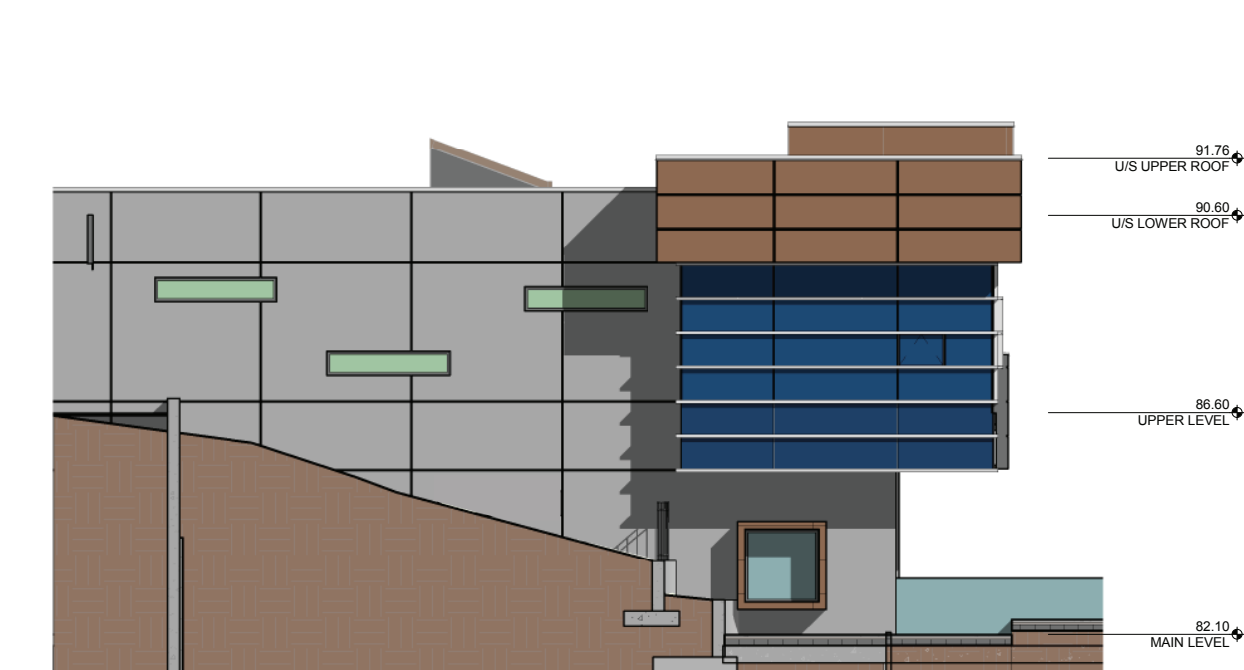


West Elevation

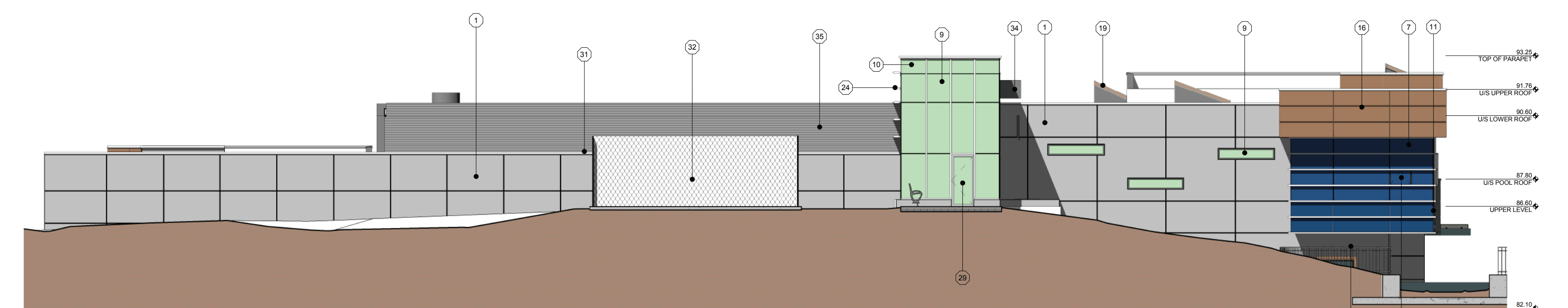


North Elevation

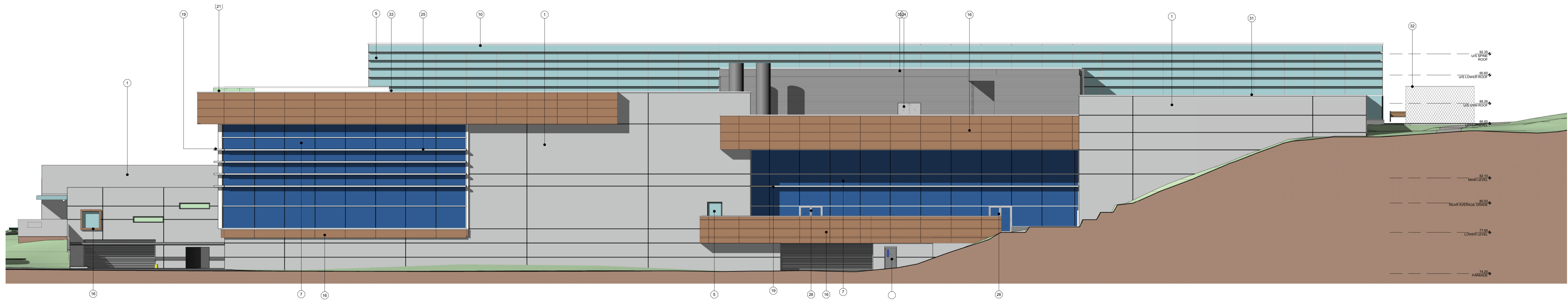
ELEVATION KEY NOTES	
1	CAST IN PLACE ARCHITECTURAL CONCRETE W/ LIGHT SANDBLAST FINISH COMPLETE W/ REVEALS AS SHOWN
2	CURTAIN WALL W/ 100MM HORIZONTAL CAPS AND 55G VERTICALS - CLEAR ANODIZED
3	CURTAIN WALL W/ 25MM HORIZONTAL CAPS AND 55G VERTICALS
4	CURTAIN WALL W/ 55G HORIZONTALS AND 25MM VERTICAL CAPS
5	EXTERIOR GLAZING - TINT #1 - LIGHT BLUE CURTAIN WALL FRAME - CLEAR ANODIZED ALUMINUM
6	EXTERIOR GLAZING - TINT #1 - LIGHT BLUE W/ 40% DOT FRNT CURTAIN WALL FRAME - CLEAR ANODIZED ALUMINUM
7	EXTERIOR GLAZING - TINT #3 - DARK BLUE CURTAIN WALL FRAME - CLEAR ANODIZED ALUMINUM
8	EXTERIOR GLAZING - TINT #2 - DARK BLUE CURTAIN WALL FRAME - CLEAR ANODIZED ALUMINUM W/ 120MM HORIZONTAL AND VERTICAL CAPS
9	EXTERIOR GLAZING - TINT #1 - LIGHT BLUE CURTAIN WALL FRAME - CLEAR ANODIZED ALUMINUM
10	EXTERIOR GLAZED SPANDREL PANEL - TINT #1 - LIGHT BLUE CURTAIN WALL FRAME - CLEAR ANODIZED ALUMINUM
11	EXTERIOR GLAZED SPANDREL PANEL - TINT #2 - DARK BLUE CURTAIN WALL FRAME - CLEAR ANODIZED ALUMINUM
12	EXTERIOR GLAZED SPANDREL PANEL - TINT #3 - GREEN CURTAIN WALL FRAME - CLEAR ANODIZED ALUMINUM
13	EXTERIOR PHENOLIC CLADDING SPANDREL PANEL - WOOD APPEARANCE #2 - LIGHT
14	FRAMELESS OPERABLE VENT - TINT #1 - LIGHT BLUE
15	FRAMELESS OPERABLE VENT - TINT #2 - DARK BLUE
16	EXTERIOR PHENOLIC CLADDING - WOOD APPEARANCE #1 - DARK
17	EXTERIOR PHENOLIC CLADDING - WOOD APPEARANCE #2 - LIGHT
18	EXTERIOR PHENOLIC CLADDING SOFFIT WOOD APPEARANCE #2 - LIGHT
19	SKYLIGHT GLAZING - TINT #1 - LIGHT BLUE SKYLIGHT FRAMING - CLEAR ANODIZED ALUMINUM
20	EXTERIOR GLASS GUARD W/ STAINLESS STEEL HANDRAILS COMPLETE W/ METAL SHOE - TINT #1 - LIGHT BLUE
21	TRANSLUCENT GLASS FASCIA PANELS WITH STAINLESS STEEL ATTACHMENTS - TINT #1 - LIGHT BLUE
22	TEMPERED AND LAMINATED GLASS CANOPY - TINT #1 - LIGHT BLUE
23	INDIVIDUAL BACKLIT SIGNAGE LETTERS
24	CLEAR ANODIZED ALUMINUM EXTERIOR SUN SHADE - SINGLE BLADE SYSTEM
25	CLEAR ANODIZED ALUMINUM EXTERIOR SUN SHADE - MULTI-BLADE SYSTEM
26	HOLLOW METAL INSULATED DOORS AND FRAMES - PAINTED
27	EXTERIOR GLAZED ALUMINUM DOOR - TINT #1 - LIGHT BLUE
28	EXTERIOR GLAZED ALUMINUM DOOR - TINT #2 - DARK BLUE
29	EXTERIOR GLAZED ALUMINUM DOOR - TINT #3 - GREEN
30	EXTERIOR GLAZED ALUMINUM SLIDING DOOR SYSTEM - TINT #1 - LIGHT BLUE
31	ORNAMENTAL METAL FENCE - POWDERCOATED
32	CHAIN LINK FENCE - POWDERCOATED
33	METAL FLASHING - PRE-FINISHED
34	CONCRETE MASONRY UNITS - PAINTED
35	CORRUGATED METAL CLADDING - PAINTED
36	EXHAUST FAN



Partial East Elevation

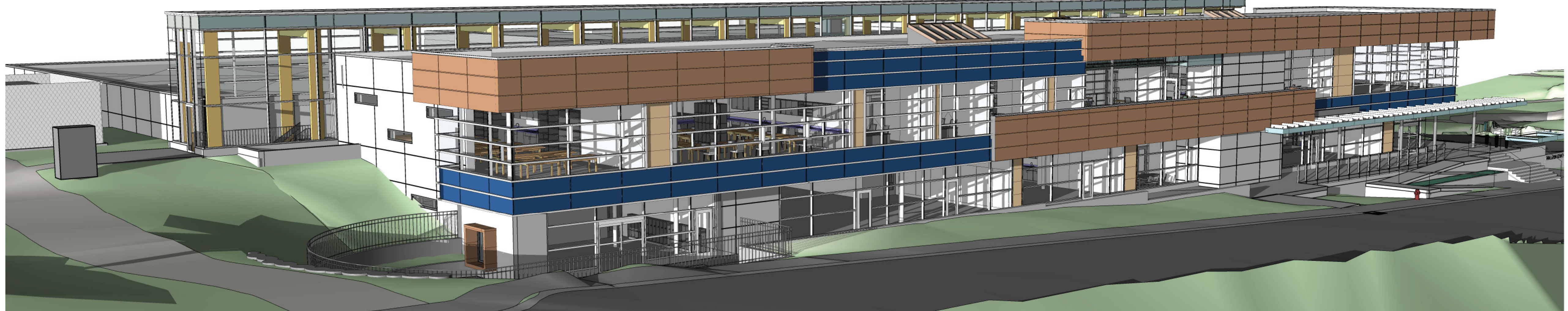


East Elevation

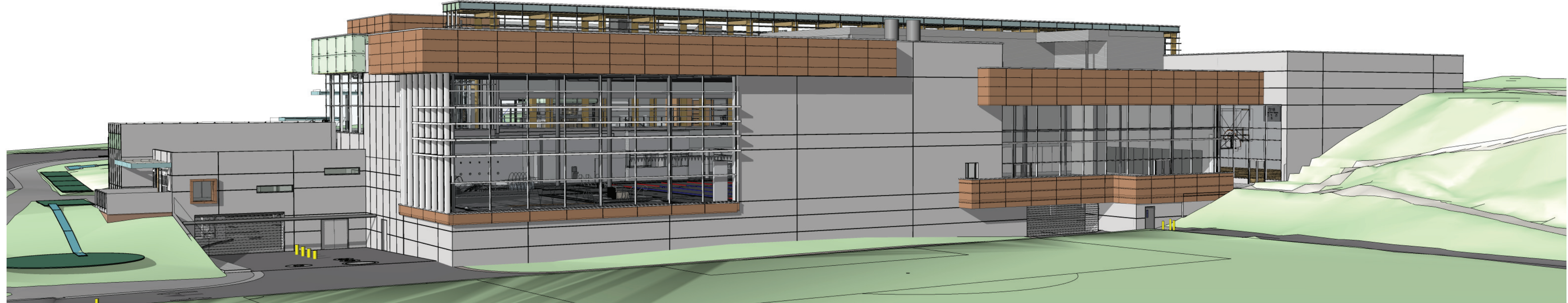


South Elevation

ELEVATION KEY NOTES	
1	CAST-IN-PLACE ARCHITECTURAL CONCRETE W/ LIGHT SANDBLAST FINISH COMPLETE W/ REVEALS AS SHOWN
2	CURTAIN WALL W/ 100MM HORIZONTAL CAPS AND 55G VERTICALS - CLEAR ANODIZED
3	CURTAIN WALL W/ 25MM HORIZONTAL CAPS AND 55G VERTICALS
4	CURTAIN WALL W/ 55G HORIZONTALS AND 25MM VERTICALS
5	EXTERIOR GLAZING - TINT #1 - LIGHT BLUE CURTAIN WALL FRAME - CLEAR ANODIZED ALUMINUM
6	EXTERIOR GLAZING - TINT #1 - LIGHT BLUE W/ 40% DOT FRET CURTAIN WALL FRAME - CLEAR ANODIZED ALUMINUM
7	EXTERIOR GLAZING - TINT #2 - DARK BLUE CURTAIN WALL FRAME - CLEAR ANODIZED ALUMINUM
8	EXTERIOR GLAZING - TINT #2 - DARK BLUE CURTAIN WALL FRAME - CLEAR ANODIZED ALUMINUM W/ 150mm HORIZONTAL AND VERTICAL CAPS
9	EXTERIOR GLAZING - TINT #3 - GREEN CURTAIN WALL FRAME - CLEAR ANODIZED ALUMINUM
10	EXTERIOR GLAZED SPANDREL PANEL - TINT #1 - LIGHT BLUE CURTAIN WALL FRAME - CLEAR ANODIZED ALUMINUM
11	EXTERIOR GLAZED SPANDREL PANEL - TINT #2 - DARK BLUE CURTAIN WALL FRAME - CLEAR ANODIZED ALUMINUM
12	EXTERIOR GLAZED SPANDREL PANEL - TINT #3 - GREEN CURTAIN WALL FRAME - CLEAR ANODIZED ALUMINUM
13	EXTERIOR PHENOLIC GLAZING SPANDREL PANEL - WOOD APPEARANCE #2 - LIGHT
14	FRAMELESS OPERABLE VENT - TINT #1 - LIGHT BLUE
15	FRAMELESS OPERABLE VENT - TINT #2 - DARK BLUE
16	EXTERIOR PHENOLIC GLAZING - WOOD APPEARANCE #1 - DARK
17	EXTERIOR PHENOLIC GLAZING - WOOD APPEARANCE #2 - LIGHT
18	EXTERIOR PHENOLIC GLAZING SOFFIT WOOD APPEARANCE #2 - LIGHT
19	SKYLIGHT GLAZING - TINT #1 - LIGHT BLUE SKYLIGHT FRAMING - CLEAR ANODIZED ALUMINUM
20	EXTERIOR GLASS GUARD W/ STAINLESS STEEL HANDRAILS COMPLETE W/ METAL SHOE - TINT #1 - LIGHT BLUE
21	TRANSLUCENT GLASS FASCIA PANELS WITH STAINLESS STEEL ATTACHMENTS - TINT #3 - GREEN
22	TEMPERED AND LAMINATED GLASS CANOPY - TINT #1 - LIGHT BLUE
23	INDIVIDUAL BACKLIT SIGNAGE LETTERS
24	CLEAR ANODIZED ALUMINUM EXTERIOR SUN-SHADE - SINGLE BLADE SYSTEM
25	CLEAR ANODIZED ALUMINUM EXTERIOR SUN-SHADE - MULTI-BLADE SYSTEM
26	HOLLOW METAL INSULATED DOORS AND FRAMES - PAINTED
27	EXTERIOR GLAZED ALUMINUM DOOR - TINT #1 - LIGHT BLUE
28	EXTERIOR GLAZED ALUMINUM DOOR - TINT #2 - DARK BLUE
29	EXTERIOR GLAZED ALUMINUM DOOR - TINT #3 - GREEN
30	EXTERIOR GLAZED ALUMINUM SLIDING DOOR SYSTEM - TINT #1 - LIGHT BLUE
31	ORNAMENTAL METAL FENCE - POWDERCOATED
32	CHAIN LINK FENCE - POWDERCOATED
33	METAL FLASHING - PREFINISHED
34	CONCRETE MASONRY UNITS - PAINTED
35	CORRUGATED METAL CLADDING - PAINTED
36	EXHAUST FAN



North Perspective



South Perspective